



Collaborating to Advance Supportive Housing

2022 Impact Report

SUMMARY OF 2019-2022 STRATEGIC PLAN



“

Systems that are aligned and better able to support the individualized needs of people in the community lighten the burden on supportive housing interventions.”

CSH advances affordable and accessible housing aligned with services by advocating for effective policies and funding, equitably investing in communities, and strengthening the supportive housing field. Since our founding in 1991, CSH has been the only national nonprofit intermediary focused solely on increasing the availability of supportive housing. Over the course of our work, we have created more than 467,600 units and distributed more than \$1.5 billion in loans and grants. Our workforce is central to accomplishing this work. In 2022, we employed approximately 170 in 28 locations across the United States and Territories. As an intermediary, we do not directly develop or operate housing but center our approach on collaboration with a wide range of people, partners, and sectors.

Visit us at [csh.org](https://www.csh.org).



Contents

Introduction

- 2** Letter From CSH’s Leader
- 3** Our Impact in 2022

Our Work in 2022

- 5** Investing in Supportive Housing Production
- 11** A Focus on Thriving and Advocacy
- 13** Harnessing Data to Generate Results
- 14** Advancing High-Impact Solutions
- 16** Expanding Organizational Capacity

Strategic Plan Recap: 2019–2022

- 18** Strategic Framework
- 19** Our Impact From 2019–2022

Financials, Funders, & Board and Leadership

- 21** 2022 Revenue and Expenses
- 22** Our Funders, Supporters, and Investors
- 27** Our Leadership

Letter From CSH's Leader

Dear Friends,

As CSH wrapped up 2022 and our 2019-2022 Strategic Plan, it was abundantly clear that our achievements were only possible through collaboration with our esteemed partners and funders.



Deborah De Santis
President and CEO

Through collaborative efforts, we sought to enhance integration between housing and services, simplifying the process for individuals to access the support they need.

Thanks to the generous support of our funders, we worked collaboratively to increase pipelines of affordable and supportive housing units in various communities. Our substantial investment in the CSH RACE (Redesigning Access by Centering Equity) Initiative aimed to strengthen developers owned or led by Black, Indigenous, or People of Color (BIPOC). Additionally, we proudly celebrated the achievements of the 12th cohort of *Speak Up!* advocates who collaborated with volunteer coaches to refine their supportive housing success stories.

Together, we are dismantling barriers and expanding housing and services, empowering our neighbors to thrive. This Annual Report documents our impact in 2022 and from 2019 to 2022. We extend our heartfelt gratitude for your ongoing partnership and support, and we eagerly welcome new collaborations to sustain and advance this vital work. Thank you!

Sincerely,

Deborah De Santis

Thanks to our funders, partners, and collaborators,
in 2022 CSH ...



ADDED
61,150
affordable and
supportive housing units
in more than
24 states



LEVERAGED
data and research
to advocate for
\$6
billion
in public funding
for housing
and services



TRAINED
27,682
attendees
through the CSH Supportive
Housing Training Center

Our



Investing in



Work

Supportive



Housing



in 2022



Production

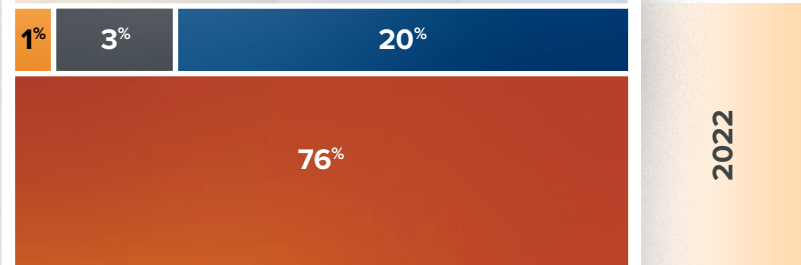


We Invested Our Resources to Increase Housing and Services

In 2022, CSH committed **\$196.6 million** in loans, grants, and New Market Tax Credits.

As part of our community investment services in 2022, CSH distributed **\$84.1 million** in predevelopment and project initiation loans and New Market Tax Credits to BIPOC developers.

How We Invested **\$196,600,000** in 2022



CSH INVESTMENT BY TYPE

Project Initiation Loans	\$1,000,000
Grants	\$6,500,000
New Market Tax Credits	\$39,000,000
Predevelopment and Acquisition Loans	\$150,100,000

2022

2021

2019

The U.S. Department of Treasury Community Development Financial Institutions Fund awarded CSH an additional \$55 million in New Market Tax Credits in 2022. This award is CSH's eighth, totaling \$375 million. To date, we have invested \$295 million in 27 projects across 14 states. We leverage the funds for projects that create access to quality healthcare or address food insecurity for supportive housing residents.

HIGHLIGHTS OF FEATURED GROUNDBREAKINGS AND RIBBON CUTTINGS



CSH joined Catholic Charities of St. Paul and Minneapolis to mark the opening of Endeavors Residence and the Richard M. Schulze Family Foundation Recuperative Care Center. CSH provided \$11,580,000 in New Market Tax Credit allocations for the Care Center operated by Catholic Charities in partnership with the Hennepin County Healthcare for the Homeless. The Center provides 30 respite beds for unhoused people and people with complex medical conditions who are exiting hospitals without access to stable housing, along with six units for veterans needing housing upon discharge from a VA Hospital. Endeavors Residence is a historic \$75 million residential project that offers 173 units of housing for single adults who have experienced homelessness, are veterans, or people with complex medical conditions.

In April 2022, Elmcour Youth & Adult Activities broke ground for a new supportive housing residence in Queens, NY, with 30 units. Twenty-one of the units will provide homes for people recovering from substance use and/or mental illness, and nine units will offer affordable homes for older adults. CSH provided a total of \$350,000 in predevelopment loans.

Photo (above): Courtesy of Catholic Charities of St. Paul and Minneapolis

Photo: Courtesy of Elmcour



CSH helped cut the ribbon for The Bedford residential homes in The Bronx, NY, which is providing 66 units of supportive housing for people formerly experiencing chronic homelessness with serious mental illness or substance abuse disorder. The beautiful complex also features 42 affordable housing units. **CSH provided a \$5,580,000 acquisition and predevelopment loan to help kick-start the project.** CSH Metro Team Director Patricia Hernandez and CSH Community Investment Officer Karuna Mehta attended the grand opening.

Photo: Karuna Mehta



CSH was on hand to break ground for the Cornell Scott-Hill Health Center in New Haven, CT. To be known as the Recovery & Wellness Center (RWC), the three-story, 31,000-square-foot building will offer a safe, short-term therapeutic living environment for people in treatment for substance use disorders and co-occurring mental health illnesses and individuals experiencing homelessness. **CSH provided a \$15 million New Market Tax Credit investment in the RWC that will open the door to recovery and stability for thousands.** Connecticut Governor Ned Lamont, State Representative Toni Walker, New Haven Mayor Justin Elicker, Cornell Scott-Hill Health CEO Michael Taylor, and CSH Community Investment Officer John Dunne were among many who attended the groundbreaking.

Photo: John Dunne



CSH joined Jersey City, NJ, Mayor Steven M. Fulop, and other community partners to celebrate the opening of the Bergenvue Apartments in the second most populated city in New Jersey. The building formerly housed a YMCA and now provides affordable 111 studio apartments with supportive housing set-asides for people experiencing homelessness. **In 2018, CSH provided a \$500,000 early-stage predevelopment loan.**

Photo: Paula Vlodkowsky



The CSH Redesigning Access by Centering Equity (RACE) Initiative is at the heart of our efforts to drive equity among communities historically shut out from capital investment. Through the RACE Initiative, we seek to invest \$200 million over five years with at least 100 developers who are BIPOC owned or led. Also, we aim to influence racial equity considerations in QAPs and other state funding and, finally, shift our lending portfolio over time to comprise 50% of BIPOC developers.

HIGHLIGHTS

We are pleased to share artist renderings or images of affordable and supportive housing projects led by developers who are Black, Indigenous and People of Color (BIPOC). These projects received predevelopment loans and customized technical assistance.

■ **The 34th and San Pablo project (34SP)** by East Bay Asian Local Development Corporation & Allied Housing, will comprise 60 units of newly constructed affordable multifamily residential units, including one manager's unit, in a seven-story building in the San Pablo corridor in West Oakland, California.

⊙ Of the 60 units, 30 (including 12 two-bedroom family units) will be designated for supportive housing for formerly homeless individuals and families, and will be restricted to 30% AMI. Of these 30 units, 25 will have project-based vouchers in order to accommodate persons with much lower incomes than 30% AMI.

⊙ Twenty-nine of the units, including seven two-bedroom family units, will be affordable at up to 60% to 80% AMI. These low-moderate income rentals are intended to prevent displacement of current neighborhood residents.

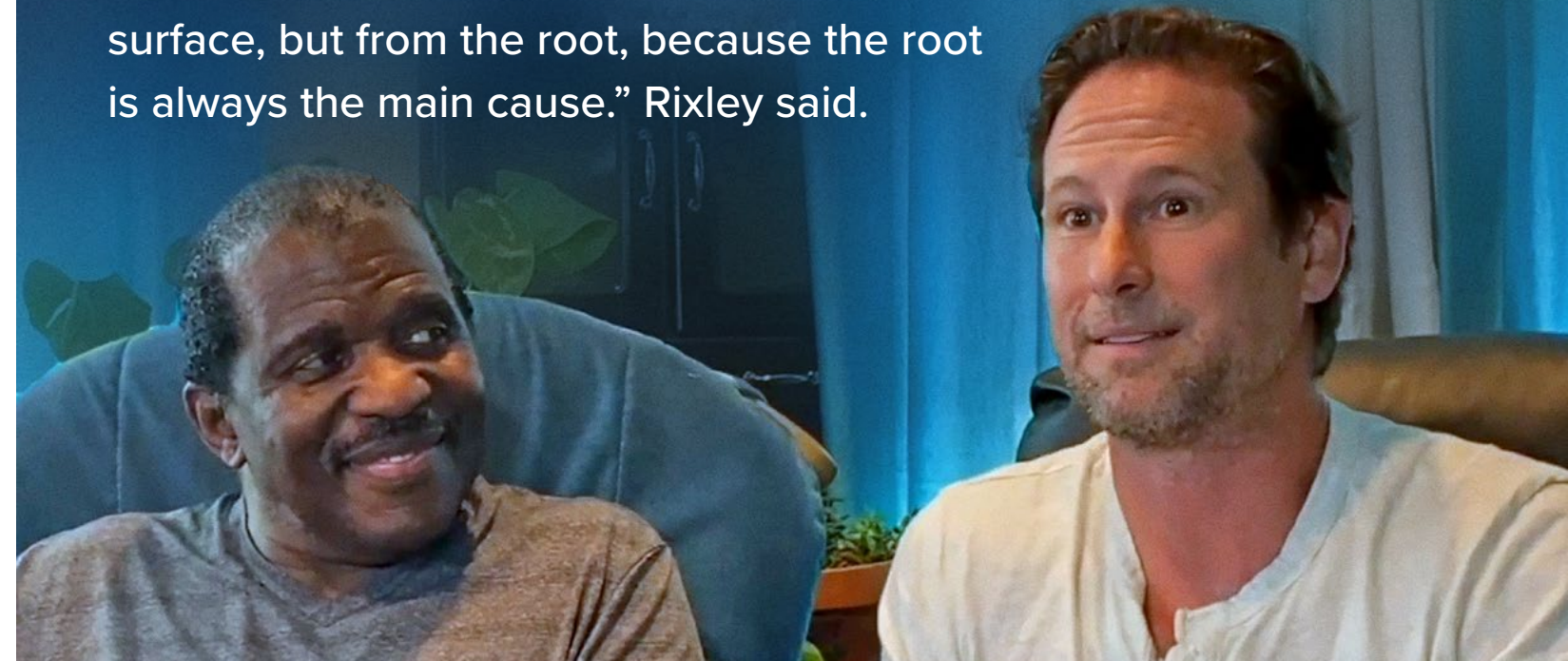
► **Crocker Umeya Apartments** by Little Tokyo Service Center, is a 175-unit development in Los Angeles, CA. Eighty-seven of those units will be permanent supportive housing units. The loan amount for this project was \$11.5MM and as of Fall 2023, the project is under construction.

⊕ Crocker Umeya Apartments will be a new supportive housing development located in the Little Tokyo and Skid Row neighborhoods of downtown Los Angeles. The project is at the site of the former Umeya Rice Cake Company Factory which has had important institutional and cultural significance to the Little Tokyo community.

- ⊕ The project will consist of a seven-story, 178,515 square foot building of 100% affordable and permanent supportive housing, and will be mixed-use development including ground floor commercial space to accommodate social services and community needs. The development will be an environmentally sustainable, LEED certified infill development.
- ⊕ Onsite amenities will include community rooms, a learning center, laundry facilities, outdoor courtyard/deck areas, bicycle parking/storage, and secured building access, and security cameras.



“My hope is that our legislators will not just view the homeless epidemic in this country from only one point of view. Not from the surface, but from the root, because the root is always the main cause.” Rixley said.



A Focus on Thriving and Advocacy

The *CSH Speak Up!* yearlong advocacy training program celebrated its 12th cohort of five advocates. *Speak Up!* is supported and cultivated by community benefactors and partners and pairs volunteer artists and storytellers with people with lived experiences of homelessness. The result is a life-changing experience for both the volunteer coaches and advocates. *Speak Up!* is about changing policy and community culture by amplifying the voices of those thriving in supportive housing. Advocates emerge from the program with new ways to tell their stories to effect meaningful and lasting change.

► *Speak Up!* Advocate and U.S. military veteran Melvyn Rixley (L) with volunteer coach Peter Kenny (R).



➤ **Speak Up! Advocate Ena Fenderson wants to use her experience to give back to others.**

“Now I am able to advocate that every community add resources so folks experiencing homelessness can receive the assistance and support they require,” Fenderson said. “This will allow them to get back on their feet, find stability, and gain independence.”



➤ **Speak Up! Advocate Shawna Riley shared how supportive housing reunited her family.**

“Today, I have a roof over my head, my son is with me, and I’ve been sober for four and a half years. I have a peace in me that’s beyond anything you can imagine,” she said. “I’m grateful for the life I have today, and I’m grateful to be a CSH *Speak Up!* Advocate.”

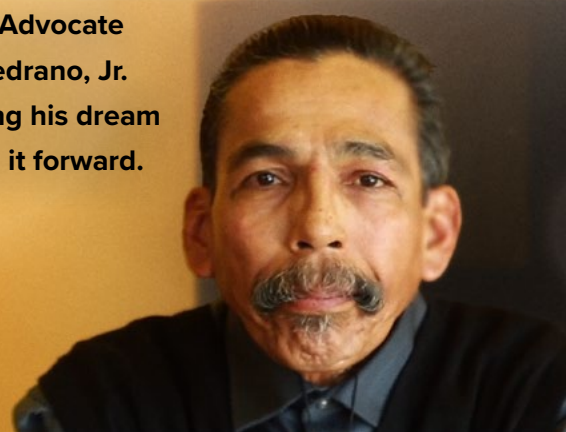


➤ **Speak Up! Advocate Gabriel Sheets shared his journey to recovery and stability.**

“Now in a state of sobriety and a conscious mind, I can definitely stay committed to being focused on staying on the straight and narrow path and helping as many people as I can.” Sheets said. [“Having stable housing] gives you the opportunity to strive for more. Everyone needs a home, a place to go to.”

“It took someone to reach out to me and to help me understand what I have gone through and to take me where I’ve always needed to be,” said Medrano. “I’m so grateful to be a part of this program because I want to help other people who are going through the same thing I have gone through. I know what it took to keep me out of prison and to have me looking forward to the life I have always wanted.”

➤ **Speak Up! Advocate Andrew Medrano, Jr. on achieving his dream and paying it forward.**



Harnessing Data to Generate Results

Supportive housing is evidence-based, research-backed, and focused on results. That focus is as critical as ever as we continue to broaden the application of housing and services to meet new demands, bring new systems and partners together, and advocate for policy change and public investments in housing and services.

HIGHLIGHTS

- ⌚ We produced national reports on Low Income Housing Tax Credit Qualified Allocation Plans and Medicaid State Actions to advance policy expanding affordable housing and tenancy supports.
- ⌚ We worked with communities to generate and evaluate data to assess the need for supportive housing, map systems, and create financial models that can inform policy and expansion of resources.
- ⌚ In partnership with NYU School of Medicine, we launched a five-year study examining the implementation of evidence-based practices to prevent drug overdose for tenants in supportive housing in New York City and New York’s Capital Region (Albany). A \$3.85 million grant from the National Institute on Drug Abuse (NIDA) funded this project titled “Implementation of Overdose Prevention Practices in Permanent Supportive Housing.” The study will also include a robust stakeholder engagement process with supportive housing tenants. The study builds on prior work that CSH led to identifying overdose risks in supportive housing.



Scan to View the July 2022 *Speak Up!* Graduation



Advancing High-Impact Solutions

CSH PUBLISHED 78 resources in 2022, spanning thought leadership, data and research, briefs, and reports.

“ I am so grateful for your work to create more permanent supportive housing in our Oregon communities. Your work is critical in helping our neighbors who are experiencing chronic homelessness to return to safe, stable, and affordable housing.”

Kate Brown, Oregon Governor

HIGHLIGHTS

- ⌚ We published the final report recapping results from the Los Angeles Just In Reach Pay for Success (JIR PFS) program—pictured above. After four years of successful program operations, JIR PFS accomplished its objectives. **A high percentage of the 349 individuals who received housing remained in their homes for at least one year.** Further, the initiative saw participants avoiding a return to jail at an even higher rate than was initially projected.
- ⌚ In a virtual presentation, Oregon Housing and Community Services (OHCS) and CSH announced nine innovative projects from the third Oregon Supportive Housing Institute (SHI). Oregon Governor Kate Brown attended and made remarks. The 2022 Oregon SHI projects focused on developing high-quality homes for chronically homeless households. Some projects were specifically designed for homeless youth transitioning out of foster care or state custody, veterans, and/or individuals who identify as LGBTQIA2S+ and Black, Indigenous and People of Color (BIPOC). Also, several projects will serve rural communities throughout the state.

⌚ CSH Signature Initiative— Supportive Housing Institute

Demand for Supportive Housing Institutes—a signature CSH initiative—increased exponentially during the past few years as communities sought to leverage federal and other funding sources to increase the pipeline of affordable and supportive housing. CSH designed the Institute’s curriculum around expanding organizational capacity, identifying revenue streams, and prioritizing quality in construction and program delivery. Nearly 100 percent of the projects developed during the Institute create new housing.

- Horizon House, a nonprofit homeless services provider in Indianapolis, broke ground in November 2022 on a project they developed during the 2020 Indiana Supportive Housing Institute. Their first-ever supportive housing building will offer 36 one-bedroom apartments for people experiencing chronic homelessness, office space for support services staff, and a community space.

📷 Photo: Guy-Jo Gordon



- CSH and the Texas State Affordable Housing Corporation (TSAHC) partnered to launch the Texas Supportive Housing Institute to boost housing production in the Austin area, which included Travis, Williamson, Bastrop, Caldwell, and Hays counties. Six teams participated in hybrid sessions, meeting virtually or in person. All teams were eligible to receive the CSH Endorsement for Quality Supportive Housing. Austin Mayor Steve Adler spoke at the Institute’s kick-off event. He noted the area’s critical need for affordable and supportive housing.

📷 Photo: DeRay Freeman



Expanding Organizational Capacity

HIGHLIGHTS

- ⌚ We engaged an outside firm for a yearlong Anti-racist Results-Based Accountability training series for approximately 60 supervisors and managers. The training occurred monthly and generated four specific recommendations for CSH to lean into and implement within its organization as part of its journey toward transformational change to become an anti-racist organization.
- ⌚ We created a new Administrative Coordination team to centralize while building capacity for business support. We established a manager-level role to lead Administrative Coordination and filled the role by recruiting and promoting within.
- ⌚ We welcomed two new members to the CSH board of directors: DeAnna Hoskins, President of JustLeadershipUSA (JLUSA), and Peggy Bailey, Vice President of Housing and Income Security, Center on Budget and Policy Priorities. Ms. Hoskins and Ms. Bailey bring a wealth of experience and knowledge on overcoming barriers to housing and economic security.
- ⌚ We hosted an in-person staff retreat in Tempe, AZ, organized by a diverse committee of staff members. More than 150 staff participated in various all-staff and breakout workshops, participated in strategic planning discussions, and enjoyed presentations from local and regional supportive housing providers and Tempe Mayor Corey D. Wood. Mayor Woods spoke on the challenges and opportunities he and his administration are addressing to reduce homelessness and increase affordable and supportive housing. The staff had a little fun, too. It was the first all-staff convening since 2019 and, for many, the first time they had met in person.

- Above: CSH staff participating in a workshop exercise at first in-person staff retreat since 2019.
- Below: Tempe, AZ mayor Corey Woods made a rousing and inspiring presentation at the 2022 All-Staff retreat. Pictured (L to R), Brooke Page, Director, CSH Southwest, Mayor Corey Woods, Deborah De Santis, President and CEO

📷 Photos: Jesse Dean



Recapping Our Strategic Plan

2019—



2022

The Strategic Framework That Guided Our Work

2022 was the final year of the CSH Strategic Plan launched in 2019, which set an ambitious goal to scale up supportive housing production by advocating and collaborating for systems integration. Systems that are aligned and better able to support the individualized needs of people in the community lighten the burden on supportive housing interventions.

The process of integrating systems requires a collective effort—from more thoughtful policies that reduce barriers and increase equity—to systems leaders open to leading collaboration with partners outside of their silos.

The result is growth in housing production and improvement in providing services that are more coordinated and people-centered. The outcome is that more people, particularly those with the greatest needs, have a home in the community and the support they need to thrive.



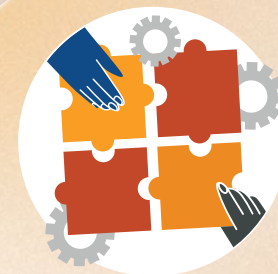
From 2019 to 2022, CSH ...



AWARDED
\$654
million
in loans, grants, and
New Market Tax Credits



MORE THAN DOUBLED
our strategic plan goal of
100,000 units
by advancing
234,174
new affordable and
supportive housing units



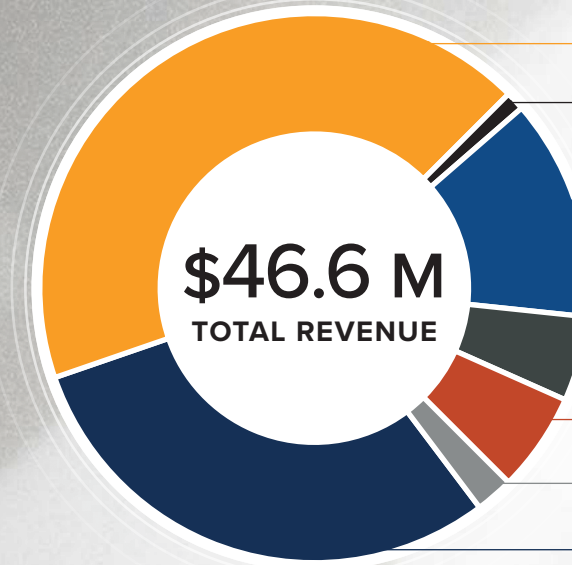
LED
20
Supportive Housing
Institutes
in 13 states

Financials, Funders, & Board and Leadership



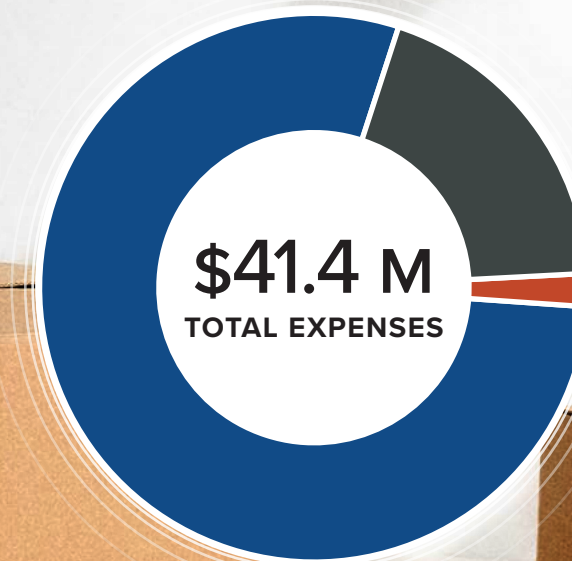
2022 Revenue and Expenses

REVENUE BREAKDOWN



- **43%** Contract Services
- **1%** Investment Income
- **13%** Loan Interest Income
- **5%** Loan Fees
- **6%** New Market Tax Credits
- **2%** Other Income
- **30%** Grants and Contributions

EXPENSE BREAKDOWN



- **19%** Management and General
- **2%** Fundraising
- **79%** Program Services

Our Funders, Supporters, and Investors

CSH thanks these individuals and companies for their generous support of our mission to advance supportive housing, end chronic homelessness, and center race equity.*

Grants and Contracts

CHAMPIONS

Alameda County Health Care Services Agency	City and County of Denver, Department of Housing Stability	Funders for Housing and Opportunity	Kaiser Permanente Community Benefit Program	NYU Grossman School of Medicine
All Chicago Making Homelessness History	City of Boise	Garcia Family Foundation	Kentucky Housing Corporation	Oak Foundation
Alliance Behavioral Healthcare	City of Greensboro-NC	Georgia Department of Public Health for Goods and Services	Kresge Foundation	Ohio Capital Corporation for Housing
Bank of America Charitable Foundation	City of Kansas City	Greater Washington Community Foundation	Los Angeles Housing and Community Investment Department	Ohio Department of Mental Health and Addiction Services
Bay's Future Fund	City of Chicago, Department of Family and Support Services	Harry and Jeanette Weinberg Foundation	Margaret A Cargill Philanthropies	Ohio Department of Rehabilitation and Correction
Block/Leavitt Fund at the Seattle Foundation	Colorado Department of Local Affairs	Hennepin County	May and Stanley Smith Charitable Trust	Ohio Housing Finance Agency
California Community Foundation	Connecticut Department of Housing	HomeBridge	McGregor Fund	Old Pueblo Community Services
California Department of Housing and Community Development	Connecticut Department of Mental Health & Addiction Services	Illinois Housing Development Authority	Melville Charitable Trust	Opportunity Finance Network
California Health Care Foundation	Conrad N. Hilton Foundation	Indiana Department of Health	Michigan State Housing Development Authority	Orange County Community Resources
Capital One	County of Fresno	Indiana Family & Social Services Administration	Missouri Behavioral Health Council	Oregon Community Foundation
CareSource Management Group	Delaware Health Care Commission	Indiana Housing and Community Development Authority	Montgomery County Department of Health and Human Services	Oregon Department of Human Services
Casey Family Programs	Destination Home	Joint Office of Homeless Services	New Hampshire Charitable Foundation	Partners for H.O.M.E.
Cedars-Sinai	Deutsche Bank	JP Morgan Chase Bank	NYC Family Funders Collaborative	Pennsylvania Housing Finance Agency
Chesterfield County Procurement Department-VA	Franklin County Office of Justice Policy and Programs			Pima County PrimeWest Health

Grants and Contracts (Continued)

Pritzker Family Foundation	St. Paul & Minnesota Foundation	The Coalition for Homelessness Intervention and Prevention	U.S. Department of Housing and Urban Development	Washington State Department of Social and Health Services
Robin Hood Foundation	State of Illinois Department of Human Services	The Colorado Trust	U.S. Department of Treasury	Washington State Health Care Authority
San Diego County Behavioral Health Services Administration	State of New Jersey, Department of Community Affairs	The Henry and Marilyn Taub Foundation	United Way of Anchorage	Washington State Housing Finance Commission
San Diego Housing Commission	State of Oregon Office of Housing and Community Services	The McKnight Foundation	van Ameringen Foundation, Inc.	Weingart Foundation
San Diego Workforce Partnership	Technical Assistance Collaborative	The National Academy for State Health Policy	Virgin Islands Housing Authority	Wells Fargo Community Development Corp.
San Francisco Mayor's Office of Housing	Texas State Affordable Housing Corporation	Trinity Church Wall Street	Virginia Dept of Behavioral Health and Disability Services	Willamette Health Council
Sauer Family Foundation	The Chicago Community Trust	U.S. Department of Health and Human Services	Washington Department of Commerce	Wisconsin Housing and Economic Development Authority
Sozosei Foundation				
Speak Up Campaign				

LEADERS

Ability Housing, Inc.	Circle of Service Foundation	Crown Family Philanthropies	Housing Authority of the City and County of Denver	Los Angeles Homelessness Services Authority
ACTION-Housing, Inc.	City of Elgin	Douglas County, KS	Human Resource Development Council	Massachusetts Alliance for Supportive Housing
Arizona Community Foundation	City of Phoenix IDA	Dwelling Place of Grand Rapids	Idaho Housing and Finance Association	Missoula, City of
Arizona Department of Housing	City of Seattle Mayor's Office - Office of Housing	Enterprise Community Partners	Indiana Association of Area Agencies on Aging	Montana CoC Coalition
Arizona Housing Coalition	Community Foundation for Southeast Michigan	Hamilton County	John D. and Catherine T. MacArthur Foundation	Montana Healthcare Foundation
Caritas of Austin	Community Health Improvement Partners	Harris Family Foundation	King County Regional Homelessness Authority	National Association of Counties
Centene Management Company LLC	Council of State Governments	Home Forward Housing Authority of San Luis Obispo		Nevada Governor's Office of Economic Development
Central Indiana Community Foundation	County of Bucks			
Charles Schwab Bank				

Our Funders, Supporters, and Investors

Grants and Contracts (Continued)

Nevada Housing Coalition	Opening Doors Fairfield County	Social Justice Partners Los Angeles	The Fan Fox and Leslie R. Samuels Foundation	Virginia Housing Alliance
New Jersey Department of Children and Families	Orange County Housing Finance Trust	Superior Health Plan Supportive Housing Provider Association (SHPA)	United Way of Yellowstone County	Vitalyst Health Foundation
North Dakota Department of Human Services	Polk Bros. Foundation	Regional Task Force on Homelessness	Valley of the Sun United Way	Washtenaw County Community and Economic Development
	Silver Summit Health Plan		Virginia G. Piper Charitable Trust	

ADVOCATES

American Institutes for Research	Contra Costa Health Services	HSBC Bank USA	Montgomery County HHS Behavioral Health	Santander Bank Foundation
Arizona State University	Coordinated Behavioral Care	Illinois Public Health Institute	National Affordable Housing Trust	St. Joseph Center
C4 Innovations	Data Across Sectors for Health	Illinois Supportive Housing Providers Association	Northwest Community Health Center	St. Peter's Health Foundation
Campion Foundation	Downtown Indy	Innovative Management Strategies	Ocean & Mountain Communications, Inc.	Synchronous Risk Management
Care Advisors	Emory University	Kem Moser Management	Orange County Health Care Agency	The M&T Bank Charitable Foundation
Cleveland Housing Network	Federal Home Loan Bank System	Solutions Consulting Group, Inc.	People's United Community Foundation	United Way of Greater Kansas City
Cleveland Neighborhood Progress and Enterprise Comm Partners	FRIENDS, National Center for CBCAP	Metropolitan Nashville-Davidson County	PNC Foundation	United Way of Greater Los Angeles
Coalition for the Homeless of Houston and Harris County, Inc	Great Lakes Addiction Technology Transfer Center	MHP Salud	Prince Charitable Trusts	University of Texas Health Science Center at San Antonio
Community Partnership for the Prevention of Homelessness	Greater Minnesota Housing Fund	MHS Indiana	Project HOME	US Bank
ConAm Management Corporation	Henrico County Home ARP	Michigan Coalition Against Homelessness	Redstone Strategy Group, LLC	USAging
	HomePlate Youth Services		San Diego Housing Federation	Watson Consulting Group

Individuals

CHAMPIONS

Angelle Adams	Dorothy Edwards	Jennifer Jones	Jsen Olesen	Constance Tempel
Angela Aidala	Salimah El-Amin	Harry Kalish	Josh Owens	Haley Tenney
Brandie Antal	Marjorie Ellenbogen	Isaac Kastenbaum	Diamond Patrick	Christian Thill
Peggy Bailey	Kimberly Elliott	Neil Kile	Olivia Pearson	Allison Torsiglieri
Brenna Boone	Kathleen Ellison	Katie Kitchin	Devanie Penny	Jennifer Troy
Stacy Brock	Hannah Ensler-Rivel	Serena Kizzair	Janet Perez	Paula Uzoka
Jeffrey Brodsky	Donald Falk	Adrienne Krasowitz	Fallon Pless	Katrina Van Valkenburgh
Deandre Brown	Michael Franco	Cheryl Lafferty	Arnold Potosky	Daniel Villela
Tora Brown	Hannah Fultz	Roland Lamb	Carolyn Powell	Adam Walker
Cassandra Buchan	Ian Funk	Kimberly and Scott Layne	Terri Power	Jordon Walters
Lanna Butler-McCoy	John Garger	Samantha Lewis	Brittany Pugmire	Ashley Warren
Hilary Chapman	Nancy Goroff	Qahir Madhany	Jamel Reed	Danielle Webb
Justin Christopher	Jameeliah Grant	Andres Marrero	Diane Riley	Douglas Weill
Gena Clair	Benjamin Groetsch	Colin Martin	Robbi Robinson	Pamela Welch
Aaron Collins	Nichole Guerra	Ryan Mason	Andrea Robison	Ciearah Whitfield
Prudence Courtney	John Hall	Ebony Mayes	Tabitha Rowlett	Cameron Wynn
Jon and Katherine Cranney	Adam Handwerker	Denise McCaffrey	Patricia Ryan	Jany Xu
David Crosby	Moyae Harvey	Nancy McGraw	Joella Sawyer	Philip Yip
Alexis Curtis	Monique Hicks	Kristin Miller	Victoria Schussler	Brook Schweikarth
Ethan David	Calvin Hill	DeAnna Minus-Vincent	Andre Sibal	Stephanie Sideman
Deborah De Santis and Elizabeth Murray	Brent Holl	Paula Morabito	Stephanie Sideman	Sarah Simmons
Jesse Dean and Evan C. Elisseou	Treyson Hopkin	Andrea Morgan	Sarah Simmons	Leah Sininsky
Scott Demaree	DeAnna Hoskins	Christopher Morris	Leah Sininsky	Tomaka Smith
Rachel Diller	Matthew Hughes	Matthew Morton	Tomaka Smith	Jarod Spence
Jordan Drachman	Judith Ignall-Snyder	Danielle Neal	Jarod Spence	Tana Spitzengel
Sandra Forquer	Latoya Jackson	Stephen Norman	Tana Spitzengel	Shawn Stansell
Dransfield	Tanya Jacobs	David and Michelle H. Norris	Shawn Stansell	Julia Stoumbos
Lori Dunn	Ari Jaffe	James O'Connell	Julia Stoumbos	Heather Strom
Joshua Dyer	Steven Jenkins		Heather Strom	Jordan Taylor
	Krystle Johnson		Jordan Taylor	
	Travis Johnson			

“The process of integrating systems requires a collective effort—from more thoughtful policies that reduce barriers and increase equity—to systems leaders open to leading collaboration with partners outside of their silos.”

Our Funders, Supporters, and Investors

Sponsors

AmeriHealth Caritas	Community Collaborative Initiative	Indianapolis Neighborhood Housing Partnership
Anthem Foundation	Community Solutions	Kuhl & Grant LLP
Butler Human Services Furniture	CORT	MHS Indiana
CAMBA	Episcopal Community Services	National Equity Fund
CareSource	FHLBank Indianapolis	UnitedHealthcare Foundation
Carla Javits		
Cinnaire		

Investors

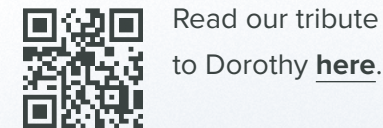
Amalgamated Bank	Hennepin County, MN	Ohio Housing Finance Agency
Annie E. Casey Foundation	HSBC Bank	Opportunity Finance Network
Bank of America	Illinois Housing Development Authority	Robert Wood Johnson Foundation
California Community Foundation	Indiana Housing & Community Development Authority	The California Endowment
Capital One	JPMorgan Chase	U.S. Bank
CommonSpirit	Los Angeles Housing Department	U.S. Department of Treasury - CDFI Fund
Conrad N. Hilton Foundation	Mercy Investment Services	van Ameringen Foundation
Deutsche Bank	Morgan Stanley	Weingart Foundation
Federal Home Loan Bank of New York		Wells Fargo

*CSH made every effort to ensure the accuracy of this list. Please contact fund.development@csh.org to inform us of errors.

Our Leadership AS OF 12/31/2023

Board of Directors

Stephan Norman Chair	DeAnna Hoskins
Rachel Diller Vice-Chair	Roland Lamb
Carolyn Powell Secretary	Judge Steven Leifman
Peggy Bailey	Qahir Madhany
Jeffrey I. Brodsky	DeAnna Minus-Vincent
Deborah Burkart	Paula Morabito, CPA
Diana Yazzie Devine	Matthew Morton
Deborah De Santis	Michelle Norris
Donald S. Falk	Dr. Jim O’Connell
	<i>In Memoriam</i>
	Dorothy Edwards



Read our tribute to Dorothy [here](#).

“People don’t decide to become homeless. Homelessness starts with a need. A need for a job with a living wage, a need for a home they can afford, a need to access healthy food, supports, and a need to be part of a community. These are basic human needs.”

Dorothy Edwards

Senior Leadership

Deborah De Santis President and CEO
Liz Drapa VP Consulting & Field Operations
Edith Gimm General Counsel
Barbara Green-Flood Managing Director, Eastern Region
Eileen Hawes Chief Financial Officer
Brigitt Jandreau Chief Lending Officer
Nancy McGraw Chief Development Officer
Ryan Moser VP, Strategy & Impact
Irene Peragallo Manager Director, Federal TA, Training Center and Consulting
Robin L. Robin Chief People and Administrative Officer
Damián Ruiz Special Advisor—Diversity, Equity, Inclusion & Belonging (DEIB)
Debbie Thiele Managing Director, Western Region
Katrina Van Valkenburgh Managing Director, Central Region



**Help Individuals and
Communities Thrive.
Support CSH Today!**





212-986-2966

info@csh.org

csh.org

Copyright 2024 © by CSH. All Rights Reserved.