



GODDARD RIVERSIDE
COMMUNITY CENTER

Senior Supportive Housing Pilot Program

HEALTHY AGING IN PLACE CONFERENCE

DECEMBER 2015

Program Overview

- Designed to address the complex and growing needs of formerly homeless tenants who are aging in 3 GRCC supportive housing sites
- Team consists of LMSW, RN (6 hours/wk) and 2 fulltime case managers providing housing/medically focused case management
- Group programming to promote socialization and healthy living skills

Program Participants

- LMSW assessed +100 individuals who fit criteria to determine most needy
- 46 clients, 65 or older who receive Medicaid
- Higher mortality rates than general population
- Unique challenges and health problems
- 15 Homeless Seniors housed at Capitol Hall

Capitol Hall Renovation



- Building had not had any work done since the 80's
- 2 year project
- \$17 million cost
- Phase-wise construction and relocation
- Number of units maintained and configuration changed to increase privacy and independence
- Created new space out of previously unused/under utilized space

Capitol Hall Renovation

Bathrooms before



And after



New Room Layouts



New Community Room



New Backyard



Environmental Modifications

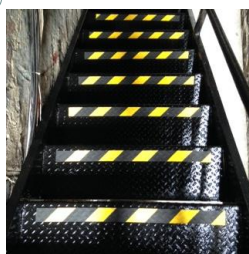
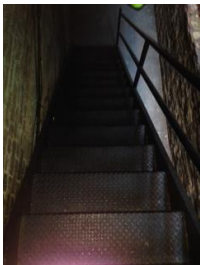
- Range Minder
- Hollow-core metal doors
- Non-slip grip tape
- Future plans for portable wheelchair ramp and new intercom system



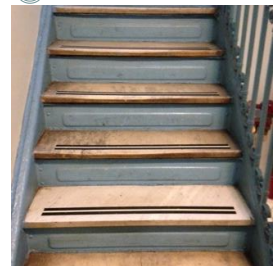
Non-Slip Step Grips



Non-Slip Step Grips



Non-Slip Step Grips



Outcomes & Statistics

- PCP in February 82% vs. October 91.1%
- Saw PCP in February 24.4% vs. October 46.7%
- Increased MOT usage (5)
- SNAP February 78% vs. October 93.3%
- No Falls in March, April, June, September, October!
- Significant decrease in Hospitalizations